

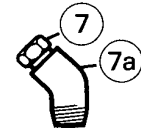
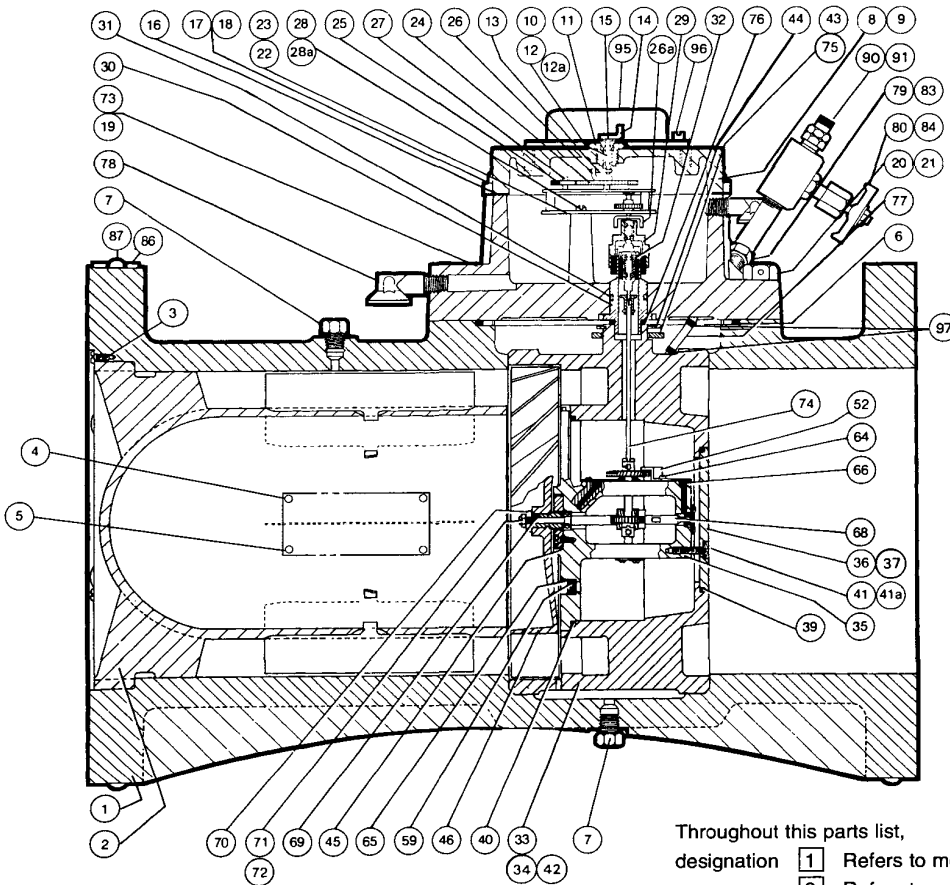


Parts List
8" Model T-60 and T-90
Mark II Turbo-Meter

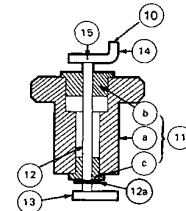
Parts List
8" MODEL T-60 AND T-90
Mark II Turbo-Meter

WORKING PRESSURES:
175, 275, 720, 1440 psi

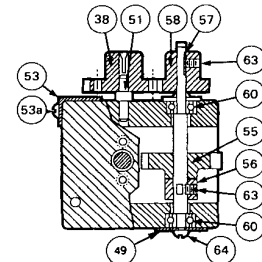
8" Model T-60 and T-90 Mark II Turbo-Meter



HP Only



Index Shaft Gland Assembly



Rotor Bracket and Worm Wheel Assembly (View From Inlet End)

Throughout this parts list, designation **1** Refers to meter serial numbers prior to 6056196
 designation **2** Refers to meter serial numbers after 6056195
 Parts without these designations are common to all T60/90 meters
NOTE: "HP" designates 275, 720 and 1440 working pressure.

T-60 and T-90 Mark II Turbo-Meter General Assembly

ILL. NO.	QTY. REQ'D.	PART DESCRIPTION	PART NUMBER
**1	1	Body Assembly, Aluminum, 175# W.P.	006-26-611-20
		Body Assembly, Cast Steel, ANSI 150, 275# W.P.	006-26-611-21
		Body Assembly, Cast Steel, ANSI 300, 720# W.P.	006-26-611-60
		Body Assembly, Cast Steel, ANSI 600, 1440# W.P.	006-26-611-90
		Body Assembly, Cast Steel, ANSI 600, 1440# W.P., With Ring Joint Flanges	006-26-611-91
2	1	Nose Cone With Straightening Vanes, All Pressures	006-26-305-21
3	3	Nose Cone Retainer, #8-32 x 1/8" Long Truss Head Stainless Steel Machine Screw	950426
4	1	Mfg. Nameplate, 175# W.P., T-60	006-26-073-20555
		Mfg. Nameplate, 275# W.P., T-60	006-26-073-30555
		Mfg. Nameplate, 720# W.P., T-60	006-26-073-60555
		Mfg. Nameplate, 1440# W.P., T-60	006-26-073-90555

ILL. NO.	QTY. REQ'D.	PART DESCRIPTION	PART NUMBER
4	1	Mfg. Nameplate, 175# W.P., T-90	006-46-073-20555
		Mfg. Nameplate, 275# W.P., T-90	006-46-073-30555
		Mfg. Nameplate, 720# W.P., T-90	006-46-073-60555
		Mfg. Nameplate, 1440# W.P., T-90	006-46-073-90555
5	4	Nameplate Drive Screw, #4 x 3/16" Long Round Head Brass Drive Screw	903004
6	1	Top Plate to Body, "O" Ring, 175# W.P., Buna-N	934352
		Top Plate to Body, "O" Ring, 175# W.P., Viton (Optional)	906745
		Top Plate to Body, "O" Ring, Buna H.P.	950191
		Top Plate to Body, "O" Ring H.P., Viton (Optional)	906746
7	2	Steel Pipe Plug, 1/2"	906055
7a	1	1/2" x 45° Street Ell, Stainless Steel, All H.P.	950762
8	1	Index Plate Assembly (Includes Ill. Nos. 9-11 & 13)	006-24-504-21
9	1	Index Plate	006-24-004-21

* Recommended Spare Parts.

** Main Body Assembly, includes Inlet and Body Badges less Nose Cone.



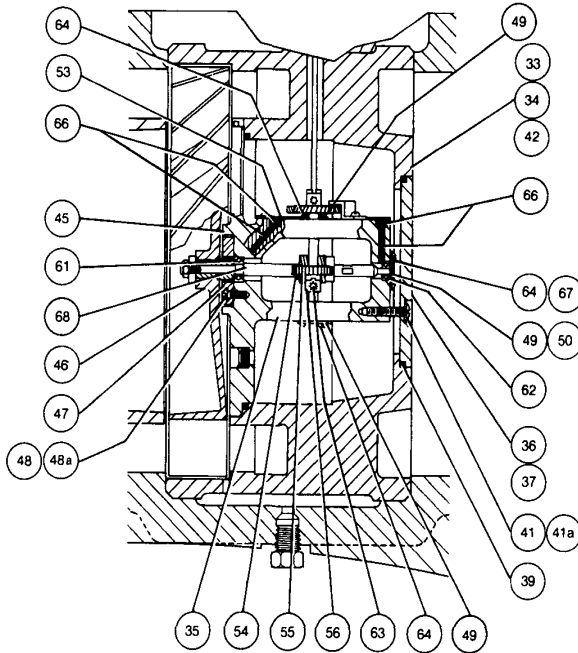
8" Model T-60 and T-90 Mark II Turbo-Meter

ILL. NO.	QTY. REQ'D.	PART DESCRIPTION	PART NUMBER
10	1	Index Drive Shaft Assembly (Includes Ill. Nos. 12, 14 & 15)	006-24-554-01
11	1	Index Shaft Gland Assembly (Includes Ill. Nos. 11a-c)	006-24-323-00
11a	1	Index Shaft Gland	006-24-023-00
11b	1	Top Bushing	006-24-052-01
11c	1	Bottom Bushing	001-60-052-62
12	1	Index Shaft	006-24-054-02
12a	1	Retaining Ring	950578
13	1	Bottom Index Shaft Dog	006-24-071-00
14	1	Top Index Shaft Dog	006-24-061-04
*15	1	Shear Pin, Top Index Shaft Dog	006-24-056-00
*16	1	Gasket, Index Plate to Top Plate	006-24-160-03
17	3	Cap Screw, Index Plate to Top Plate, 3/16"-18 x 3/4" Long Hex Head, Steel	910028
18	1	Seal Screw, Index Plate to Top Plate, 3/16"-18 x 3/4" Long Hex Head Steel	002-65-057-02
19	1	Top Plate Assembly, Aluminum 175# W.P. (All Top Plates are Drilled for Saturable Core Pulse Generator and Include Oil Tubing)	006-26-303-21
		Top Plate Assembly, ANSI 150, 275# W.P.	006-26-303-33
		Top Plate Assembly, ANSI 300 & 600, 720# & 1440# Steel	006-26-303-98
20	11	Cap Screw, Top Plate to Body, 175# W.P. 1/2"-13 x 1 1/2", Hex Head, Steel Grade 5	910108
	11	Cap Screw, Top Plate to Body, 275# W.P. 1/2"-13 x 1 1/2", Hex Head, Steel Grade 8	950065
	13	Cap Screw, Top Plate to Body, 720# & 1440# W.P. 7/8"-9 x 2 1/4", Hex Head, Steel Grade 8	907511
21	1	Seal Screw, Top Plate to Body, 175# W.P. 1/2"-13 x 1 1/2" Long Hex Head, Steel Grade 5	002-26-056-00
	1	Seal Screw, Top Plate to Body, 275# W.P. 1/2"-13 x 1 1/2", Hex Head, Steel Grade 8	006-26-056-01
	1	Seal Screw, Top Plate to Body, 720# & 1440# W.P. 7/8"-9 x 2 1/4", Hex Head, Steel Grade 8	006-26-057-91
*22	1	Intermediate Gear Assy, Without Change Gears, 1000 CF/Rev. Output (Plastic)	006-24-212-40
*23	1	Intermediate Gear Assy, 10 M ³ /Rev. Output (Plastic) Without Change Gears	006-24-212-41
24	1	Large Change Gear (Note: "XX" Refers to Gear Blank Size, "YY" Refers to Number of Gear Teeth. Digits Must be Substituted for "XX" & "YY" When Ordering. See Drawing SD-1034-C1)	006-24-3XX-YY
25	1	Small Change Gear (See Note Above)	006-24-3XX-YY
26	1	Intermediate Gear Output Dog (Top)	002-66-071-03
26a	1	Intermediate Gear Driver Dog (Bottom)	006-24-061-20
27	1	Small Change Gear Nut, #4-40 Hex Stainless Steel	907639
28	3	Intermediate Gear Mounting Screws #8-32 x 3/8" Long Fillister Head Machine Screw, Stainless Steel	903371
28a	1	#8 Lock Washer	950371
*29	1	Follower Magnet Assembly (includes Follower Magnet Holder Assembly and Ill. Nos. 29a-c)	006-24-313-20
		Follower Magnet Assembly for Units w/Slot Sensor (includes Follower Magnet Holder Assembly and Ill. Nos. 29a-c)	006-24-313-22

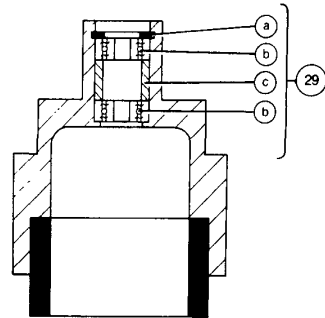
* Recommended Spare Parts

ILL. NO.	QTY. REQ'D.	PART DESCRIPTION	PART NUMBER
29a	1	Bearing Retaining Ring, E-Clip	904691
29b	2	Bearing	905462
29c	1	Spacer	006-24-106-20
*30	1	Driver Magnet Well & Post Assembly, 175# & 275# W.P.	006-24-244-20
		Driver Magnet Well & Post Assembly, 720# & 1440# W.P.	006-26-244-90
*31	1	Driver Magnet Well "O" Ring, Buna-N	950193
		Driver Magnet Well "O" Ring, Viton (Optional)	908264
*32	1	Driver Magnet Holder & Bearing Assembly (Includes Ill. Nos. 32a-d)	006-31-334-00
*32a	1	Driver Magnet Holder & Groove Pin Assembly With Magnet	006-31-234-02
32b	1	Bearing Retaining Ring	904691
32c	2	Bearing	905462
32d	1	Spacer	006-22-106-03
33	1	Complete Internal Housing, T-60 Assy, Calibrated With Change Gears, 175# W.P. With Buna "O" Rings	006-26-302-23
		175# W.P. With Viton "O" Rings, T-60	006-26-302-22
		275# W.P. With Buna "O" Rings, T-60	006-26-302-31
		H.P. With Buna "O" Rings, T-60	006-26-302-99
		H.P. With Viton "O" Rings, T-60	006-26-302-98
		Complete Internal Housing, T-90 Assy, Calibrated With Change Gears, 175# WP Buna	006-56-302-23
		175# WP with Viton "O" Rings T90	006-56-302-22
		275# WP with Buna "O" Rings T90	006-56-302-31
34	1	HP with Buna "O" Rings T90	006-56-302-99
		HP with Viton "O" Rings T90	006-56-302-98
		Internal Housing & Adapter Plate Assy, 175# W.P. (Includes Ill. Nos. 42, 43, 44 & Oil Tube), T-60	006-26-202-21
		Internal Housing & Adapter Plate Assembly, H.P. (Includes Ill. Nos. 42, 43, 44 & Oil Tubing), T-60 and T-90	006-26-202-90
		Internal Housing & Adapter Plate Assembly, 175# W.P. (Includes Ill. Nos. 42, 43, 44 & Oil Tube), T-90	006-56-202-21
		Internal Housing & Adapter Plate Assy, 275# W.P. (Includes Ill. Nos. 42, 43, 44 & Oil Tubing T60 and T90)	006-26-202-30
		Rotor Bracket & Worm Wheel Assembly, 175# W.P. (Includes Ill. Nos. 45-49, 51-71 & 48a), T-60	006-26-309-21
		Rotor Bracket & Worm Wheel Assy, H.P. (Includes Ill. Nos. 38, 45, 46, 47, 48, 48a, 49, 50-60, 61, 62, 63-67, 68, 69, 70, 72), T-60	006-26-309-23
35	1	Rotor Bracket & Worm Wheel Assy, All All W.P. (Includes Ill. Nos. 38, 45, 46, 47, 48, 48a, 49, 50, 51, 52, 53, 53a, 54, 67, 69, 70 & 72), T-90	006-56-309-90
		Internal Housing Plate Assembly, (Includes Ill. Nos. 37, 59 & 65)	006-24-210-20
36	1	Internal Housing Plate Assembly, (Includes Ill. Nos. 37, 59 & 65)	006-24-210-20
37	1	Internal Housing Plate	006-24-010-21
38	1	44T Slotted Drive Gear, T-60	006-31-444-44
		38T Slotted Drive Gear, T-90	006-56-444-38
*39	1	Tetraseal, Buna-N	1191301
		Tetraseal, Viton (Optional)	906962
*40	1	Tetraseal, Buna-N	906735
		Tetraseal, Viton (Optional)	906740
41	2	#10-24 x 3/4" Round Head Stainless Steel Machine Screw	905549
41a	2	Lock Washer, External 3/16" Steel	904016
42	1	Internal Housing (Less Oil Tubing) 175# W.P., T-60	006-26-002-21
		Internal Housing (Less Oil Tubing), All H.P., T-60 & T-90	006-26-002-90
		Internal Housing (Less Oil Tubing), 175# W.P., T-90	006-56-002-21
43	1	Adapter Plate & Bushing Assembly	006-22-262-01
		Adapter Plate & Bushing Assembly, ANSI 150, 275# W.P. Only	006-26-262-30

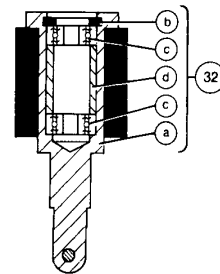
8" Model T-60 and T-90 Mark II Turbo-Meter



Rotor, Bracket and Internal Housing Assembly



Follower Magnet and Bearing Assembly



Driver Magnet Holder and Bearing Assembly

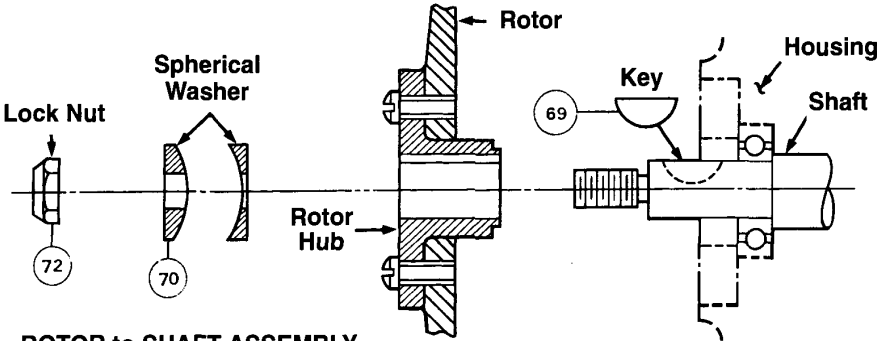
ILL. NO.	QTY. REQ'D.	PART DESCRIPTION	PART NUMBER
44	1	E-Clip	904435
45	1	Bearing Bracket & Pin Assembly, 175# W.P., T-60	006-26-209-21
		Bearing Bracket & Pin Assembly, H.P., T-60	☐ 006-26-209-90 ☒ 006-56-209-90
		Bearing Bracket & Pin Assembly, All W.P., T-90	006-56-209-90
46	1	Rotor & Hub Assy, 175#, T-60	006-26-350-20
		Rotor & Hub Assy, H.P., T-60	006-26-250-90
		Rotor & Hub Assy, All, T-90	006-56-250-90
47	1	Bearing Retainer, Rotor End, 175# W.P., T-60	006-24-117-20
		Bearing Retainer, Rotor End, H.P. T-60 & All W.P., T-90	006-26-117-90
48	2	#4-40 x 3/8" Long Fillister Head Stainless Steel Machine Screw	903340
48a	2	#4 External Stainless Steel Lock Washer	950078
49	3	Bearing Retainer Plate 175# W.P., T-60	006-22-117-01
		Bearing Retainer Plate, All H.P., T-60 & All W.P., T-90	006-22-117-01
50	1	Bearing Retainer Plate, All H.P., T-60	☐ 006-31-117-01 ☒ 006-34-117-01
		Bearing Retainer Plate, All W.P., T-90	006-34-117-01
51	1	44T Gear Post	006-31-028-00
52	1	"Z" Bracket, Gear Retainer	006-24-080-00
53	1	Oil Reservoir Cover Plate	006-24-079-01
53a	4	#4-40 x 1/8" Long Round Head Stainless Steel Machine Screw	907401
54	1	Worm Stainless Steel	006-26-017-80
55	1	Worm Wheel	006-24-035-00
56	1	Worm Wheel Collar	006-24-070-02
57	1	Worm Wheel Shaft	006-24-046-20

ILL. NO.	QTY. REQ'D.	PART DESCRIPTION	PART NUMBER
58	1	17T Gear, T-60	006-26-317-17
		23 Tooth Gear, T-90	006-46-317-23
59	2	Filter Screen	006-22-083-01
60	2	Worm Wheel Shaft Bearing	908660
61	1	Upstream Rotor Shaft Bearing, 175# W.P., T-60	905435
		Upstream Rotor Shaft Bearing, All H.P., T-60 & All W.P., T-90	906019
62	1	Downstream Rotor Shaft Bearing 175# W.P., T-60	905457
		Downstream Rotor Shaft Bearing, All H.P., T-60	☐ 905435 ☒ 950277
		Downstream Rotor Shaft Bearing, All W.P., T-90	950277
63	5	#6-32 x 1/4" Long Socket Stainless Steel Nylon Locking Set Screw	950375
64	7	#4-40 x 1/4" Long Round Head Stainless Steel Machine Screw	903025
65	2	Filter Screen Retaining Ring	904419
66	2	Oiler Felt .09 x .09	1191430
67	3	#3-48 x 3/16 Lg. Stainless Steel Round Head Screw, T-90	903013
68	1	Rotor Shaft, 175# W.P., T-60	006-24-024-20
		Rotor Shaft, All H.P., T-60	☐ 006-26-024-90 ☒ 006-56-024-90
		Rotor Shaft, All W.P., T-90	006-56-024-90

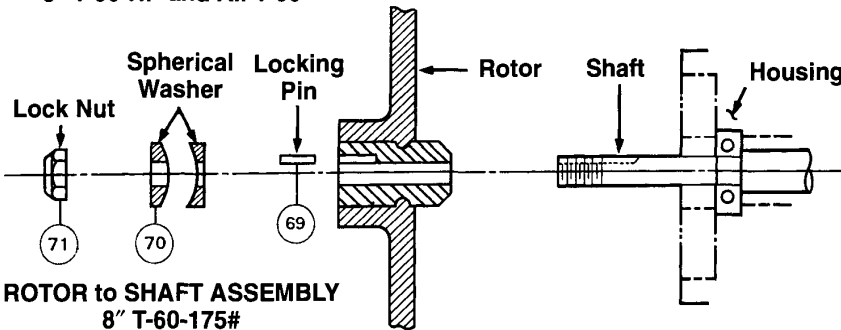
☐ Refers to meter serial numbers prior to 6056196

☒ Refers to meter serial numbers after 6056195

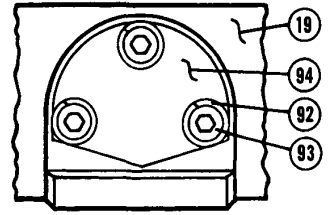
8" Model T-60 and T-90 Mark II Turbo-Meter



ROTOR to SHAFT ASSEMBLY
8" T-60-HP and All T-90



ROTOR to SHAFT ASSEMBLY
8" T-60-175#



Wiring Connector Hole Cover on Side of Top Plate

ILL. NO.	QTY. REQ'D.	PART DESCRIPTION	PART NUMBER
69	1	Rotor Locking Pin, 175# W.P. T-60 Key, All H.P. T-60 & All T-90	006-24-020-20 906111
70	1	Spherical Washer Set, 175# W.P. T-60 Spherical Washer Set, All H.P. T-60 and All W.P. T-90	906179 908723
71	1	Nut #10-24 Hex Head Stainless Steel, 175# T-60	906180
72	1	Nut, 1/2-20 Hex Head Stainless Steel, All H.P. T-60 and All T-90	908661
73	1	Measuring Module, Complete 175# W.P. (Includes Ill. Nos. 6, 19, 22, 28-34, 74, 75, 76-80, 90, 91 & 97), T-60 Measuring Module, Complete, 275# W.P. (Includes Ill. Nos. 6, 19, 22, 28-32, 34, 74-80, 90, 91 & 97), T-60 Measuring Module, Complete 720# & 1440# W.P. (Includes Ill. Nos. 6, 7, 7a, 19, 22, 28, 29, 30, 31, 32, 34, 74, 75-78, 83, 84, 90, 91 & 97), T-60 Measuring Module Complete, All W.P. T-90	006-26-502-21 006-26-502-37 006-26-502-91 Contact an Equimeter Rep.
74	1	Coupling Shaft, 175# & 275# W.P. Coupling Shaft, 720# & 1440#	006-26-345-20 006-26-345-90
75	2	#8-32 x 3/4" Hex Head Stainless Steel Machine Screw, Adapter Plate to Top Plate	906178
*76	1	Tetraseal, Buna-N Tetraseal, Viton (Optional)	904214 906736
77	1	Oil Tubing, 3/16" O.D. x .031" Wall	99993
78	2	Vent Cap 1/4" Assembly	006-24-505-01
79	1	Nipple, 1/4" x 1/4" Hexagonal Brass, 175# W.P.	904765
80	1	1/4" Brass Needle Valve, 175# W.P.	950428

ILL. NO.	QTY. REQ'D.	PART DESCRIPTION	PART NUMBER
83	1	1/4" x 1/4" Pipe, Hexagonal Nipple, 3" Long, All H.P., Stainless Sch. 80	950760
84	1	1/4" Valve, All H.P., Bar Stock	950710
86	1	Inlet Badge	015-16-090-02
87	2	#2 x 1/8" Long Round Head Brass Drive Screw	903003
88	1	Manufacturer Badge, Affixed to Top Plate	T60 006-26-073-25555 T90 006-56-073-25555
89	4	#0 x 1/8" Long Round Head Brass Drive Screw	903001
90	1	Alemite Fitting #1650	006-24-145-00
91	1	1/4" x 1/8" Male-Female Bushing Stainless (Used With Alemite Fitting Ill. No. 90)	905195
92	3	1/4" Stainless Steel Lock Washer	904030
93	3	1/4"-20 x 5/8" Long Socket Head Stainless Steel Cap Screw	908179
94	1	Cap Probe Mounting Hole	006-24-129-00
95	1	Cover, Stuffing Box	225-16-131-01
96	2	#8-32 x 3/4" Long Round Head Steel Machine Screw (Used With Ill. No. 95)	914450
97	2	Compression Ring	950682

Optional Items

Oil, 4 ounce bottle, RFEM	006-22-405-01
Oil, 1 Gallon Can	006-22-405-02
Lubrication Hand Gun	006-24-400-00
Blank Top Plate, 175# W.P.	006-26-003-25
Blank Top Plate, 275# W.P.	006-26-003-26
Blank Top Plate, 720#, 1440# W.P.	006-26-003-92



805 Liberty Boulevard
DuBois, PA 15801
814-375-8875
Fax 814-375-8460

Authorized Distributor

All products purchased and services performed are subject to Sensus' terms of sale, available at either; <http://na.sensus.com/TC/TermsConditions.pdf> or 1-800-METER-IT. Sensus reserves the right to modify these terms and conditions in its own discretion without notice to the customer.

This document is for informational purposes only, and SENSUS MAKES NO EXPRESS WARRANTIES IN THIS DOCUMENT. FURTHERMORE, THERE ARE NO IMPLIED WARRANTIES, INCLUDING WITHOUT LIMITATION, WARRANTIES AS TO FITNESS FOR A PARTICULAR PURPOSE AND MERCHANTABILITY. ANY USE OF THE PRODUCTS THAT IS NOT SPECIFICALLY PERMITTED HEREIN IS PROHIBITED.